



**COMPLIES COMPLETELY WITH  
RDSO SPECS NO.  
TI / SPC / OHE / TIPS / 1031 (Dec 2013)**

## **DT-9885 Performance Thermal Imager**

DT-9885 is High Performance Thermal Imager with high resolution 384x288, help you to find the potential problems with innovation features and functionality, you can perform infrared inspections faster and more efficiently and thoroughly document problem areas for additional information.



### **KEY FEATURES**

- 384x288 High Performance & high resolution Thermal Imager with TFT color LCD display
- Professional IR-optical focus system ensures that images are in good focus for optimum image clarity and scanning convenience
- Thermview analysis system—quickly identify and keep track of inspection locations by adding digital images of important information and surrounding areas
- Finds problems faster and easier by accurately identifying potential issues by combining digital and IR images
- Picture in Picture function Displays Thermal Image super-imposed over a digital image
- LED Flashlight allows the visual camera and fusion to be used in poorly lit environments
- Wide Temperature Range from -20 to +500°C targeting electrical and industrial applications
- ±2% Accuracy for reliable temperature measurement
- The image rotation facility allows to automatically rotate the active image
- Audio recording with the video image acts as a speaker to listen to audio recorded with the video image
- Capacitive touch screen is easier, productive and efficient to operate it
- Lithium polymer Rechargeable Battery lasts > 4hrs continuous use; and is replaceable
- An easy-to-access thumbnail image gallery helps you to quickly review and find your thermal images.
- Area (Min/Max) mode shows the Minimum or the Maximum Temperature reading in the selected area
- A conveniently located button activates the laser pointer that will help you associate the hot or cold spot in the thermal image with the real physical target in the field.
- In order to adapt the device to every situation both wide angle and tele-lenses are available.
- Equipped with standard video, USB outputs as well as a removable SD card.

## SPECIFICATIONS

Imaging And Optical Data	
<b>IR Resolution</b>	384 x 288 pixels, Focal Plane Array (FPA), Uncooled Microbolometer
<b>Field of View (FOV)</b>	24.6° x 18.6°
<b>Minimum focus Distance</b>	0.3m (0.99ft.)
<b>Spatial Resolution</b>	(IFOV) 1.14mrad
<b>Thermal Sensitivity / NETD</b>	< 0.05°C @ +30°C (+86°F) / 50 mK
<b>Image Frequency</b>	50Hz
<b>Focus mode</b>	Manual
<b>Zoom</b>	1-20x Continuous, Digital Zoom
<b>Rotate</b>	0° - 360°, Continuous Change by 1°
Image Presentation	
<b>Display</b>	3.5" TFT, Capacitive Touch Screen
<b>Image modes</b>	IR Image, Visual Image, Picture in Picture
<b>Picture in Picture</b>	IR Area on Visual Image or Visual Image Area on IR
<b>Color Palettes</b>	IRON / RAINBOW / GREY / GREY INVERTED / SEPIA / BLUE-RED / HOT-COLD / FEATHER
Measurement	
<b>Object Temperature Range</b>	Low Range -20°C to + 150°C (-4°F to + 302°F) High Range 0°C to + 500°C (+32°F to + 932°F)
<b>Accuracy</b>	±2°C (±3.6°F) or ±2% of Reading
Measurement Analysis	
<b>Spotmeter</b>	3
<b>Emissivity Adjustable</b>	0.01 ~ 1.0 Adjustable
<b>Emissivity Table</b>	Emissivity Table of Predefined Materials
<b>Line</b>	2 lines (Horizontal and Vertical)
<b>Area</b>	3 Boxes with max. / min. / Average
<b>Automatic Hot / Cold Detection</b>	Auto Hot or Cold Spotmeter Markers
<b>Isotherm</b>	Detect High / Low Temperature / Interval
<b>Difference Temperature</b>	Delta Temperature Between Measurement Pointer and Reference Pointer
<b>Measurement corrections</b>	Emissivity, Ambient Temperature, Distance, Relative Humidity, Offset Temperature
Set-Up	
<b>Laser / Flood light</b>	< class2 / white LED Floodlight
<b>Set-up Commands</b>	Local Adaptation of Units, Language, Date and Time Formats, Information of Camera
<b>Languages</b>	English, Chinese, French, German, Spanish
Storage Of Videos	
<b>Storage Media</b>	4 Gbytes Micro SD Card
<b>Video Storage format</b>	Standard MPEG-4, 640x480@30fps, on Memory Card > 60 Minutes
<b>Video Storage Mode</b>	IR / Visual Images; Simultaneous Storage of IR and Visual Images
Storage Of Images	
<b>Image Storage Format</b>	Standard JPEG, Including Measurement Data, on Memory Card > 1000 Pictures
<b>Image Storage Mode</b>	IR / Visual Images; Simultaneous Storage of IR and Visual Images

## SPECIFICATIONS

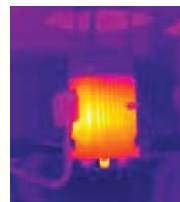
Annotations	
<b>Text Annotations</b>	User defined text annotations with each image using onscreen keyboard
<b>Voice Annotations</b>	Users can record upto 60 seconds of voice tag along with each image
Digital Camera	
<b>Built-in Visible Light Digital Camera</b>	2 Mega pixels
Data Communication Interfaces	
<b>USB Interfaces</b>	USB-mini, data transform between camera and PC
<b>Video Out</b>	Composite (PAL and NTSC)
Power System	
<b>Battery</b>	Lithium polymer battery, 4 hours operating time
<b>Input Voltage</b>	DC 9V to 12V
<b>Charging System</b>	In camera (AC adapter)
<b>Power Management</b>	Automatic shutdown and sleep mode (user selectable)
Environmental Data	
<b>Operating Temperature Range</b>	-20°C to + 50°C (-4°F to + 122°F)
<b>Storage Temperature Range</b>	-40°C to + 70°C (-40°F to + 158°F)
<b>Relative Humidity (operating and storage)</b>	0% to 90% non condensing
<b>Encapsulation</b>	IP65
<b>Drop test</b>	2m
<b>Bump</b>	25g (IEC60068-2-29)
<b>Vibration</b>	2g (IEC60068-2-6)
<b>Size (H x W x D)</b>	243mm x 103mm x 160mm
<b>Weight</b>	920g

## APPLICATIONS

HVAC/R  
 Transportation / Automotive  
 Cooling and Reheating  
 Serving Areas  
 Food Service Equipment  
 Cold Storage

## INCLUDED ACCESSORIES:

Hard Transport Case, 22mm Lens, Sun Visor, Tripod Base, AC Charger / Power Supply, Earphone, Battery, Camera Lens Cap, Software CD-ROM, Handstrap, Micro SD Card, USB Cable & RCA Cable, Gift Box.



## AAYUSH ELECTRICALS & INSTRUMENTATION

ISO 9001-2015 CERTIFIED COMPANY

Office Address : # 1, 1st Main, 2nd Cross, Maruthinagar, Bengaluru, Karnataka - 560 026. India  
 Factory Address : #18 ,4th A Main Road, Bahubali Nagar, Jahalli Village, Bengaluru - 560013  
 Email : [sales@aayushei.com](mailto:sales@aayushei.com) / [marketing@aayushei.com](mailto:marketing@aayushei.com) / [accounts@aayushei.com](mailto:accounts@aayushei.com)  
 Web : [www.aayushei.com](http://www.aayushei.com) , Mob : +91 88922 55555 / 96639 82272/ 88922 77777



QMS/019303/1120